



Cordless Heated Jacket Series

DCJ205 / DCJ206 / DVC202 **LXT**
CJ105D / CJ106D / CV102D **CXT**



HEATED JACKET and VEST

DCJ205 / CJ105D

DCJ206 / CJ106D

DVC202 / CV102D



HEATED JACKET and VEST



Max run time

7.0 h

Mode : High

Battery : BL1850B



Jacket type
DCJ205 / CJ105D



High-visibility type
DCJ206 / CJ106D



Features



Battery pocket

■ DCJ205 / CJ105D

■ DCJ206 / CJ106D

■ DCV202 / CV102D



Two-way zip fastener

■ DCJ205 / CJ105D

■ DCJ206 / CJ106D

■ DCV202 / CV102D



Pen pocket

■ DCJ205 / CJ105D

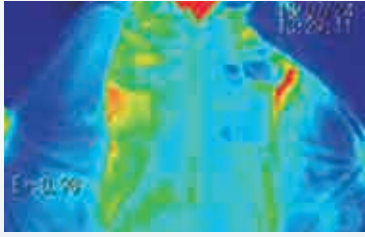


Detachable hood

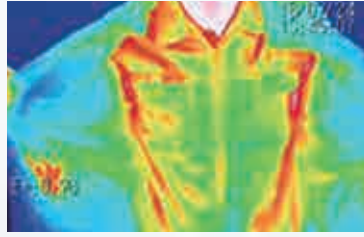
■ DCJ206 / CJ106D

Heating effects

When wearing in a minus 5 degree C environment (in High mode)



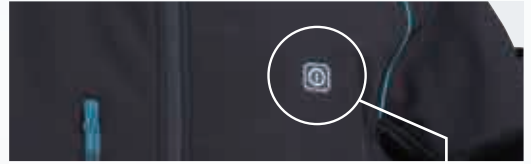
when switch is off



about 15 minutes after switch-on

3 Heat settings

Continuous runtime on a single full battery charge



Low



29h

Medium



11h

High



7h

with BL1850 (18V-5.0Ah Battery)

5 Heat zones

■ DCJ205 / CJ105D ■ DCJ206 / CJ106D

Left chest, right chest and back have each heating element.



4 Heat zones

■ DCV202 / CV102D

Left chest, right chest and back, neck have each heating element.



Wind and Water Resistance

prevents penetration of water such as light rain.



Fleece lining

warms a body even when switch is off



Vest type

■ DCV202 / CV102D



Washable and dryable

Detach the battery holder from the jacket or vest before washing.



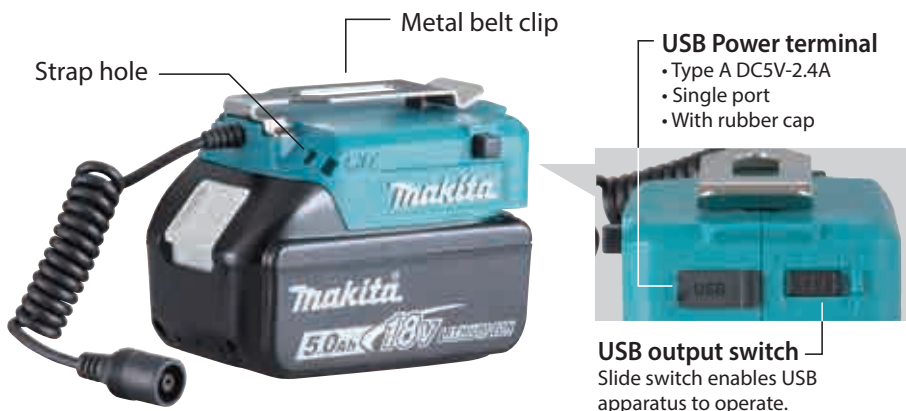
Name tag holder
■ DCJ206 / CJ106D



Retroreflective material
■ DCJ206 / CJ106D

Accessories

Battery holder Powered by Makita Li-ion Battery



As a charger for smart phones



LXT

18V
LITHIUM-ION

14.4V
LITHIUM-ION



Part No. YL00000004

CXT

12Vmax
LITHIUM-ION



Part No. YL00000003

Jacket Size



	size (in cm)	S	M	L	XL	2XL	3XL
DCJ205 / CJ105D	Length	68	69	71	75	78	82
	Shoulder	50.5	52.5	54.5	55.5	56.5	57.5
	Sleeve	63	64.5	66	67	68	69
	Chest	108	118	128	138	146	156
DCJ206 / CJ106D	Waist	102	112	122	132	140	150
	Length	72	73	74	75	76	77
DCV202 / CV102D	Shoulder	47.5	49.5	51.5	53.5	55.5	57.5
	Chest	114	120	126	132	138	144
	Waist	116	122	128	134	140	146

Longer continuous run time on a single full battery charge

Model No.	Battery holder	Li-ion Battery		Continuous run time Low / Medium / High	Net weight Jacket size L	Pockets
DCJ205			6.0Ah BL1860B	35 / 14 / 8.5 h with BL1860B	1.1kg (2.5 lbs.)	5
DCJ206			5.0Ah BL1850B		1.2kg (2.5 lbs.)	
DCV202			4.0Ah BL1840B	35 / 20 / 10 h with BL1860B	0.5kg (1.1 lbs.)	4
			3.0Ah BL1830B	14 / 5.5 / 3.5 h with BL1041B	1.1kg (2.5 lbs.)	5
CJ105D			2.0Ah BL1820B		1.2kg (2.5 lbs.)	
CJ106D			1.5Ah BL1815N		0.5kg (1.1 lbs.)	
CV102D			1.5Ah BL1016	14 / 7.5 / 4 h with BL1041B	0.5kg (1.1 lbs.)	4

The weight may differ depending on the attachment(s), including the battery cartridge. The lightest and heaviest combination, according to EPTA-Procedure 01/2014, are shown in the table. Items of standard equipment and specifications may vary by country or area.

Makita Corporation

3-11-8 Sumiyoshi-cho, Anjo, Aichi, 446-8502 Japan

PRINTED IN JAPAN 201809