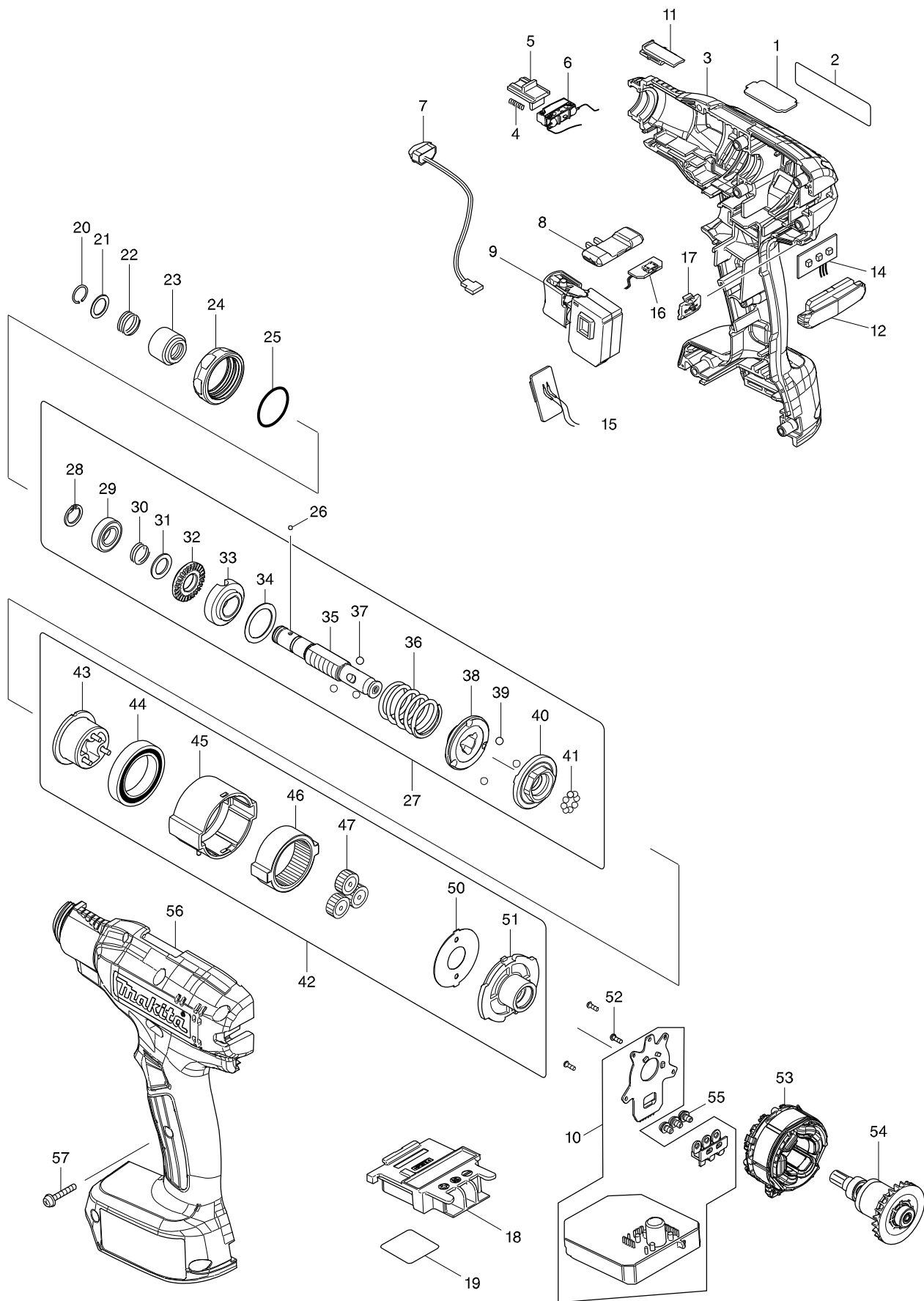


Číslo typu DFT023F CORDLESS SCREWDRIVER



Položka	Číslo dílu	Popis	Změn	Množstv	N/O	Možnost 1	Možnost 2	Poznámka
001	345647-6	PLATE L		1				
002	853A21-5	DFT023F NAME PLATE		1				
003	183F88-2	HOUSING SET		1				
C10	263005-3	RUBBER PIN 6		2				
C20	931002-4	HEX. NUT M3		7				
D10		INC. 56						
004	233025-1	COMPRESSION SPRING 2		1				
005	457525-9	SWITCH LEVER		1				
006	632K18-5	SWITCH UNIT		1				
007	620521-2	LED CIRCUIT		1				
008	457469-3	F/R CHANGE LEVER		1				
009	651082-1	SWITCH C3JW-1B-S		1				
010	620617-9	CONTROLLER		1				
011	457526-7	CHANGE PLATE		1				
012	457484-7	LENS		1				
014	620622-6	LED CIRCUIT		1				
015	620621-8	BUZZER CIRCUIT		1				
016	620623-4	USB CIRCUIT		1				
017	144709-5	USB COVER		1				
018	643850-6	TERMINAL		1				
019	853A24-9	DFT023F SERIAL NO. LABEL		1				
020	233930-2	RING SPRING 9		1				
021	267070-4	FLAT WASHER 10		1				
022	232374-3	COMPRESSION SPRING 10A		1				
023	161607-8	BIT SLEEVE		1				
024	457530-6	LOCK NUT M28 BLACK		1				
025	213836-0	O-RING 22		1				
026	216015-9	STEEL BALL 2,4		2				
027	123937-5	CLUTCH ASSEMBLY 2M		1				
D10		INC. 28-41						
028	961026-6	RETAINING RING S-10		1				
029	210076-1	BALL BEARING 6800LLB		1				
030	232375-1	COMPRESSION SPRING 10B		1				
031	267047-9	FLAT WASHER 10		1				
032	326953-8	LOCK NUT M12		1				
033	144421-7	ADJUST RING COMPLETE		1				
034	253391-0	FLAT WASHER 18		1				
035	326944-9	SPINDLE M		1				
036	232372-7	COMPRESSION SPRING 18A		1				
037	216024-8	STEEL BALL 4		3				
038	223185-7	CAM A		1				
039	216024-8	STEEL BALL 4		3				
040	223186-5	CAM B		1				
041	216001-0	STEEL BALL 3,5		8				
042	123969-2	GEAR ASSEMBLY A		1				
D10		INC. 43-47,50,51						
043	144423-3	CARRIER COMPLETE A		1				
044	211375-4	BALL BEARING 6805LLB		1				

