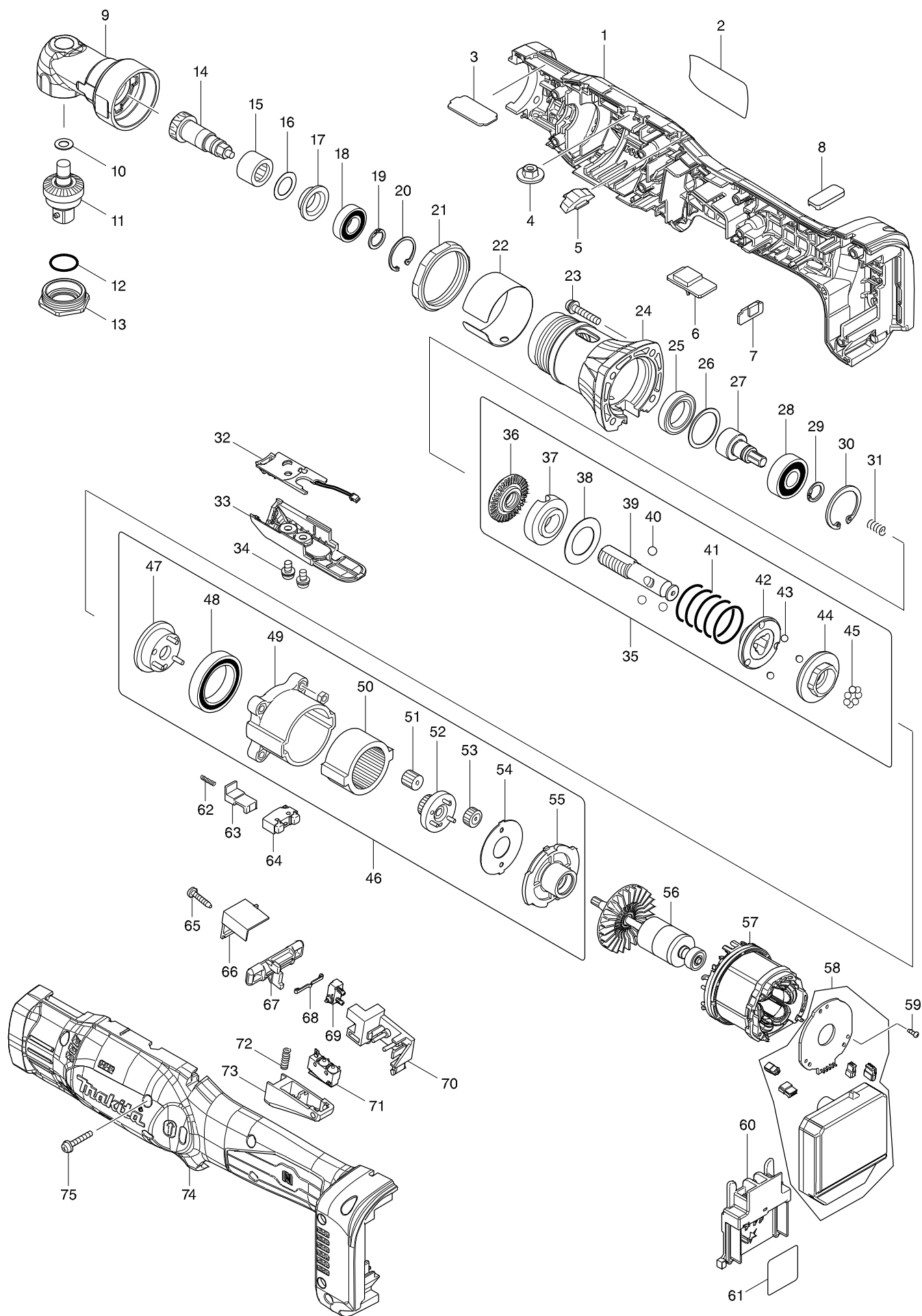


# Číslo typu DFL083F CORDLESS ANGLE SCREWDRIVER



Položka	Číslo dílu	Popis	Změn	Množstv	N/O	Možnost 1	Možnost 2	Poznámka
001	183J44-6	HOUSING SET		1				
C10	263005-3	RUBBER PIN 6		2				
C20	252825-0	INSERT NUT M4-4		4				
C30	931002-4	HEX. NUT M3		8				
D10		INC. 74						
002	854E99-5	DFL083F NAME PLATE		1				
003	345282-0	PLATE A		1				
004	252142-8	HEX.NUT FLANGE M5		1				
005	458391-7	LENS		1				
006	620792-1	BUZZER CIRCUIT		1				
007	620793-9	USB CIRCUIT		1				
008	424827-8	USB COVER		1				
009	144970-4	ANGLE HEAD COMPLETE		1				
010	253777-8	FLAT WASHER 8		1				
011	154447-1	SPINDLE A COMPLETE		1				
012	213222-5	O RING 15		1				
013	285722-5	BEARING RETAINER 15-26		1				
014	227478-4	SPIRAL BEVEL GEAR 9		1				
015	212122-6	NEEDLE BEARING 1212		1				
016	253312-2	THIN WASHER 12		1				
017	345281-2	SPACER		1				
018	210057-5	BALL BEARING 6900LLB		1				
019	961026-6	RETAINING RING S-10		1				
020	962102-9	RETAINING RING R-22		1				
021	252187-6	HEX. NUT M36-41		1				
022	345442-4	RING 38J		1				
023	265145-3	+ PAN HEAD SCREW M4X22		4				
024	317808-8	CLUTCH CASE		1				
025	211283-9	BALL BEARING 6803ZZ		1				
026	267283-7	FLAT WASHER 21		1				
027	326992-8	SPINDLE B		1				
028	211088-7	BALL BEARING 6000DDW		1				
029	961026-6	RETAINING RING S-10		1				
030	962105-3	RETAINING RING R-26		1				
031	233019-6	COMPRESSION SPRING 5		1				
032	620396-9	LED CIRCUIT		1				
033	457976-6	SWITCH COVER		1				
034	265171-2	PAN HEAD SCREW M4X8		2				
035	126770-4	CLUTCH ASSEMBLY O		1				
D10		INC. 36-45						
036	324834-0	LOCK NUT M12		1				
037	158408-3	ADJUST RING COMPLETE		1				
038	267276-4	FLAT WASHER 18		1				
039	327086-2	SPINDLE		1				
040	216018-3	STEEL BALL 5.0		3				
041	233356-8	COMPRESSION SPRING 19A		1				
042	223146-7	CAM D		1				
043	216024-8	STEEL BALL 4		3				

