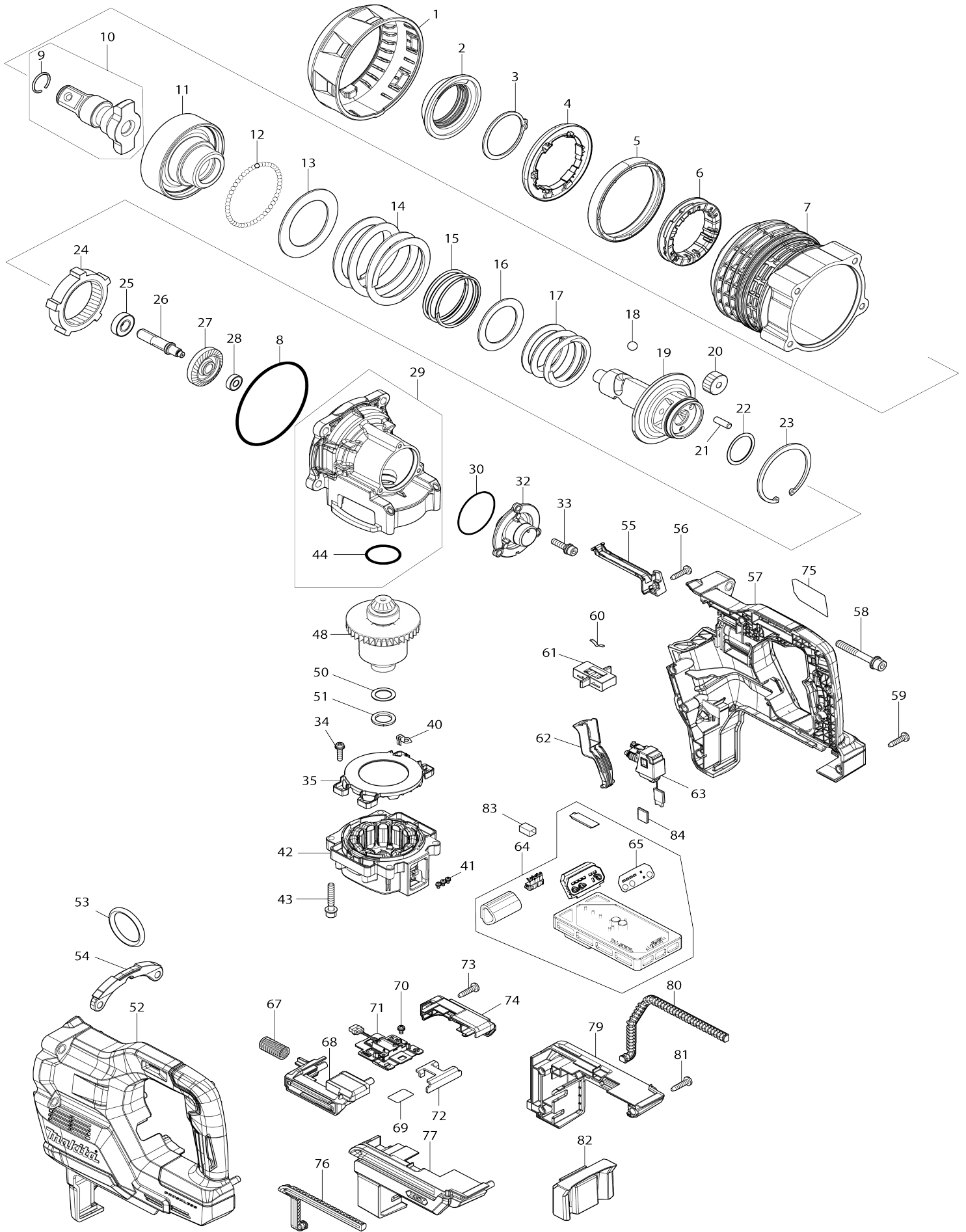


# Model No.TW009G Cordless Impact Wrench



# Model No.TW009G Cordless Impact Wrench

| Obj. č. | Obj. č.  | Popis                                 | Možnost záměny | Množství | Nový/Starý | Poznámka 1              | Poznámka 2 |
|---------|----------|---------------------------------------|----------------|----------|------------|-------------------------|------------|
| 001     | 422B73-9 | Bumper A                              |                | 1        | *          | n                       |            |
| 001-1   | 422C89-0 | Bumper A                              | <              | 1        | *          |                         |            |
| 001-2   | 422E21-6 | BUMPER A                              | S              | 1        |            |                         |            |
| 002     | 422B66-6 | Bumper B                              |                | 1        | *          | n                       |            |
| 002-1   | 422C90-5 | Bumper B                              | <              | 1        | *          |                         |            |
| 002-2   | 422E22-4 | BUMPER B                              | S              | 1        |            |                         |            |
| 003     | 961254-3 | Retaining ring (EXT) S-58             |                | 1        |            |                         |            |
| 004     | 620P36-5 | LED circuit                           |                | 1        |            | led okruh               |            |
| 005     | 422B71-3 | Rubber vibration isolator A           |                | 1        |            | vyrovn                  |            |
| 006     | 422B72-1 | Rubber vibration isolator B           |                | 1        | *          | pry                     |            |
| 006-1   | 422C88-2 | Rubber vibration isolator C           | <              | 1        |            |                         |            |
| 007     | 141W72-5 | Hammer case complete                  |                | 1        | *          | obal TW009G=new1411R7-0 |            |
| 007-1   | 1411R7-0 | Hammer case complete                  | <              | 1        | *          | obal TW009G=old141W72-5 |            |
| 007-2   | 1414R9-4 | HAMMER CASE COMPLETE                  | S              | 1        |            |                         |            |
| 008     | 213914-6 | O-ring 100                            |                | 1        |            | krou                    |            |
| 009     | 231921-7 | pojistný kroužek 22                   |                | 1        |            | pojistn                 |            |
| 010     | 137143-6 | Anvil E assembly                      |                | 1        | *          |                         |            |
| 010     |          | INC. 9                                |                |          | *          |                         |            |
| 010-1   | 137458-1 | ANVIL E ASS'Y                         | O              | 1        |            |                         |            |
| 010-1   |          | INC. 9                                |                |          |            |                         |            |
| 011     | 327D89-0 | Hammer                                |                | 1        |            | kladivo                 |            |
| 012     | 216018-3 | kulička 5.0 BFL/BFT                   |                | 49       |            | kuli                    |            |
| 013     | 253609-9 | Flat washer 60A                       |                | 1        |            | ploch                   |            |
| 014     | 232874-3 | Compression spring 71                 |                | 1        |            | pru                     |            |
| 015     | 232875-1 | Compression spring 61                 |                | 1        |            | pru                     |            |
| 016     | 253610-4 | Flat washer 48                        |                | 1        |            | ploch                   |            |
| 017     | 232873-5 | Compression spring 51                 |                | 1        |            | tla                     |            |
| 018     | 216010-9 | kulička 10.3 6910/TW1000              |                | 2        |            | kuli                    |            |
| 019     | 327D88-2 | Spindle                               |                | 1        |            | v                       |            |
| 020     | 227B64-3 | Spur gear 24                          |                | 3        |            | vzp                     |            |
| 021     | 256197-5 | čep 7 = old 331507-8                  |                | 3        |            |                         |            |
| 022     | 267039-8 | Flat washer 32                        |                | 1        |            |                         |            |
| 023     | 962352-6 | segrovka vnitřní R-75                 |                | 1        |            | segrovka vnit           |            |
| 024     | 227B58-8 | Internal gear 57                      |                | 1        |            | vnit                    |            |
| 025     | 211131-2 | kuličkové ložisko 6001DDW =old 922041 |                | 1        |            | lo                      |            |
| 026     | 227B63-5 | Spur gear 9                           |                | 1        |            | vzp                     |            |
| 027     | 227B61-9 | Spiral bevel gear 31                  |                | 1        |            | ozuben                  |            |
| 028     | 211021-9 | Ball bearing 607LLB                   |                | 1        |            | 922056 kuli             |            |
| 029     | 137146-0 | Internal gear case assembly           |                | 1        | *          | vnit                    |            |
| C10     | 263002-9 | vymezovací čep 4                      |                | 1        | *          |                         |            |
| 029     |          | INC. 44                               |                |          | *          |                         |            |
| 029-1   | 137271-7 | Internal gear case assembly           | <              | 1        | *          |                         |            |
| C10     | 263002-9 | vymezovací čep 4                      |                | 1        | *          |                         |            |
| 029-1   |          | INC. 44                               |                |          | *          |                         |            |
| 029-2   | 137327-6 | Internal gear case assembly           | <              | 1        | *          |                         |            |
| C10     | 263002-9 | vymezovací čep 4                      |                | 1        | *          |                         |            |

|       |          |                                     |   |    |   |  |  |
|-------|----------|-------------------------------------|---|----|---|--|--|
| 029-2 |          | INC. 44                             |   |    | * |  |  |
| 029-3 | 137351-9 | Internal gear case assembly         | < | 1  | * |  |  |
| C10   | 263002-9 | vymezovací čep 4                    |   | 1  | * |  |  |
| 029-3 |          | INC. 44                             |   |    | * |  |  |
| 029-4 | 137449-2 | INTERNAL GEAR CASE ASS'Y            | < | 1  |   |  |  |
| C10   | 263002-9 | vymezovací čep 4                    |   | 1  |   |  |  |
| 029-4 |          | INC. 44                             |   |    |   |  |  |
| 030   | 213604-1 | o-kroužek 50                        |   | 1  |   | o-krou                                     |  |
| 032   | 137161-4 | Bearing cover assembly              |   | 1  |   | v  |  |
| C10   | 263002-9 | vymezovací čep 4                    |   | 1  |   |  |  |
| 033   | 266903-0 | Hex. socket head bolt M5X20 WR      |   | 3  |   |  |  |
| 034   | 911128-8 | Pan head screw M4X16 WR             |   | 4  |   |  |  |
| 035   | 4130L1-7 | Baffle plate                        |   | 1  |   | deska                                      |  |
| 036   | 4130L0-9 | Motor housing inner                 |   | 1  | * | hadice motoru vnit                         |  |
| 037   | 629C72-0 | Stator                              |   | 1  | * | stator=new1410X4-2                         |  |
| 038   | 620P37-3 | Controller B                        |   | 1  | * | ovlada                                     |  |
| 039   | 687B69-9 | Stopper                             |   | 1  | * | zar  |  |
| 040   | 654910-9 | Earth plate                         |   | 1  |   | deska                                      |  |
| 041   | 652031-1 | Pan head screw M3X6                 |   | 3  | * |  |  |
| 041-1 | 652077-7 | Flat head screw M3X6                | O | 3  |   |  |  |
| 042   | 312F54-4 | Motor housing                       |   | 1  | * | sk   |  |
| 042-1 | 1410X4-2 | Motor housing complete              | S | 1  | * | obal motoru se stato<br>rem a elektronikou |  |
| 042-2 | 1412A8-5 | Motor housing complete              | < | 1  | * | obal motoru se stato<br>rem a elektronikou |  |
| 042-3 | 1413H0-6 | Motor housing complete              | < | 1  | * |  |  |
| 042-4 | 1414C8-1 | Motor housing complete              | < | 1  |   |  |  |
| 043   | 265D24-9 | Hex. socket head bolt M5X30 WR<br>M |   | 4  | * |  |  |
| 043-1 | 265E69-3 | Hex. socket head bolt M5X30 WR<br>M | O | 4  |   |  |  |
| 044   | 213460-9 | o-kroužek 35                        |   | 1  |   | o-krou                                     |  |
| 048   | 519860-4 | Rotor assembly                      |   | 1  | * | rotor ass'y                                |  |
| 048-1 | 519860-4 | Rotor assembly                      | O | 1  |   | rotor ass'y                                |  |
| 050   | 253198-4 | podložka 18 JS3200/2704             |   | 1  |   | podlo                                      |  |
| 051   | 261129-9 | plastová podložka 18 2704           |   | 1  |   | plastov                                    |  |
| 052   | 1830L3-4 | Housing set                         |   | 1  | * | obal                                       |  |
| 052   |          | INC. 57                             |   |    | * |  |  |
| 052-1 | 1831F9-6 | Housing set                         | < | 1  |   | obal                                       |  |
| 052-1 |          | INC. 57                             |   |    |   |  |  |
| 053   | 282022-4 | Ring 40                             |   | 1  |   |  |  |
| 054   | 162D36-2 | Bracket                             |   | 1  |   | zar  |  |
| 055   | 4130L2-5 | Lead cover                          |   | 1  | * | kryt                                       |  |
| 055-1 | 4133K1-8 | Lead cover A                        | < | 1  |   |  |  |
| 056   | 266326-2 | šroub 4x18=new265995-6              |   | 1  |   |  |  |
| 057   | 1830L3-4 | Housing set                         |   | 1  | * | obal                                       |  |
| 057   |          | INC. 52                             |   |    | * |  |  |
| 057-1 | 1831F9-6 | Housing set                         | < | 1  |   | obal                                       |  |
| 057-1 |          | INC. 52                             |   |    |   |  |  |
| 058   | 265D71-0 | Hex. socket head bolt M8X60 WR<br>M |   | 4  |   |  |  |
| 059   | 266326-2 | šroub 4x18=new265995-6              |   | 12 |   |  |  |
| 060   | 232872-7 | Leaf spring                         |   | 1  |   | listov                                     |  |

|       |          |                              |   |   |   |                   |  |
|-------|----------|------------------------------|---|---|---|-------------------|--|
| 061   | 141W75-9 | F/R change lever complete    |   | 1 |   | p                 |  |
| 062   | 4130L3-3 | Switch lever                 |   | 1 |   | sp                |  |
| 063   | 141W69-4 | Switch complete              |   | 1 | * | p                 |  |
| 063-1 | 1411Y4-5 | Switch complete              | S | 1 | * |                   |  |
| 063-2 | 1413D4-0 | Switch complete              | S | 1 |   |                   |  |
| 064   | 137160-6 | Controller assembly          |   | 1 | * |                   |  |
| 064   |          | INC. 65                      |   |   | * |                   |  |
| 064-1 | 137245-8 | Controller assembly          | S | 1 | * | ovl               |  |
| 064-1 |          | INC. 65                      |   |   | * |                   |  |
| 064-2 | 137285-6 | Controller unit assembly     | S | 1 | * | ovl               |  |
| 064-2 |          | INC. 65                      |   |   | * |                   |  |
| 064-3 | 137451-5 | CONTROLLER ASS'Y             | S | 1 |   |                   |  |
| 064-3 |          | INC. 65                      |   |   |   |                   |  |
| 065   | 8012S9-8 | Switch label                 |   | 1 |   |                   |  |
| 066   | 266490-9 | Pan head tapping screw 2X6   |   | 3 | * |                   |  |
| 067   | 232650-5 | Compression spring 13        |   | 1 |   | pru               |  |
| 068   | 1830L0-0 | Battery holder set           |   | 1 |   | dr                |  |
| C10   | 263005-3 | vymezovací čep 6             |   | 2 |   |                   |  |
| 068   |          | INC. 74                      |   |   |   |                   |  |
| 069   | 8146G0-7 | Serial No. label TW009G      |   | 1 |   |                   |  |
| 070   | 652031-1 | Pan head screw M3X6          |   | 2 |   |                   |  |
| 071   | 632T08-2 | Terminal unit                |   | 1 | * | patice VC001-005G |  |
| 071-1 | 632W79-7 | Terminal unit                | < | 1 |   |                   |  |
| 072   | 347C62-8 | Support plate                |   | 1 |   | deska             |  |
| 073   | 266326-2 | šroub 4x18=new265995-6       |   | 2 |   |                   |  |
| 074   | 1830L0-0 | Battery holder set           |   | 1 |   | dr                |  |
| C10   | 263005-3 | vymezovací čep 6             |   | 2 |   |                   |  |
| 074   |          | INC. 68                      |   |   |   |                   |  |
| 075   | 8146F8-4 | Name plate TW009G            |   | 1 |   |                   |  |
| 076   | 422B69-0 | Cushion rubber L             |   | 1 |   | pry               |  |
| 077   | 1830L1-8 | Battery housing set          |   | 1 |   | pouzdro akumul    |  |
| 077   |          | INC. 79                      |   |   |   |                   |  |
| 079   | 1830L1-8 | Battery housing set          |   | 1 |   | pouzdro akumul    |  |
| 079   |          | INC. 77                      |   |   |   |                   |  |
| 080   | 422B70-5 | Cushion rubber R             |   | 1 |   | pry               |  |
| 081   | 266326-2 | šroub 4x18=new265995-6       |   | 3 |   |                   |  |
| 082   | 422642-4 | Cushion rubber               |   | 1 |   | guma              |  |
| 083   | 685725-3 | molitanový kryt kondenzátoru |   | 1 | * | molitanov         |  |
| 083-1 | 685725-3 | molitanový kryt kondenzátoru | < | 4 |   | molitanov         |  |
| 084   | 424248-4 | Sponge sheet 15-25           | S | 1 | * |                   |  |
| A01   | 122G63-9 | Side handle assembly         |   | 1 |   |                   |  |

Prosím uveďte objednáč. číslo dílu v objednávce

Datum tisku 06. 05. 2026