



Cordless Vacuum Cleaner VC013GL / VC014GL



**High-power vacuuming
and Low noise level**

Max sealed suction*¹
15^{*3} kPa
Hose size: ø28mm x 2m

Air flow volume*¹
2.0^{*3} m³/min
Hose size: ø28mm x 2m

Noise level*²
75^{*3} dB(A)
Hose size: ø28mm x 2m



VC013GL

Cleaning with the wireless activation function



VC014GL

General cleaning

*1 Measured with a hose, according to JISC9108

*2 According to EN60335-2-69

*3 Maximum suction power with the suction force adjusting knob



VC013GL only

Powerful vacuuming for faster, more efficient cleaning

Suction power capable of lifting three 500ml bottles



*The image is intended to convey suction force. Do not attempt to lift objects.

Powered by 40Vmax XGT Li-Ion battery



High-power vacuuming

High power achieved by increased motor size and rotation speed from the predecessor model

Max sealed suction*¹
15 kPa

Hose size: ø28mm x 2m

Air flow volume*¹
2.0 m³/min

Hose size: ø28mm x 2m

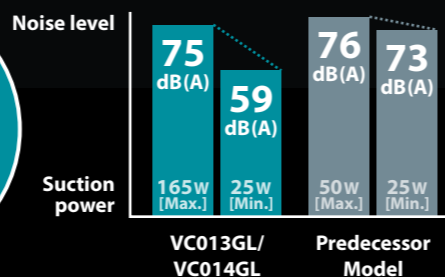
Noise level*²
75 dB(A)

Hose size: ø28mm x 2m

*¹ Measured with a hose, according to JISC9108 *² According to EN60335-2-69 *³ Maximum suction power with the suction force adjusting knob

Low noise level

Low noise levels have been achieved by supporting the motor assembly with rubber components to suppress vibrations.



Compact, portable and easy-to-use



Foldable handle



Shoulder belt

Variable suction power control

The suction power can be adjusted steplessly to suit the task or application.

Main power switch

Battery fuel gauge

Suction force adjusting knob



Blower function

Blower cleaning is possible by connecting the hose to the blower outlet.



XPT
IPX4-compatibility



Tank capacity

Dry **7.5L** | Wet **4.5L**

Continuous run time (approx.) on a full battery charge

Maximum Minimum
22 - 120 min.
[Battery: BL4050F]



Cleaning with the wireless activation function VC013GL

AWS Bluetooth

Compatible with Auto-start Wireless system [VC013GL only]



Wireless unit storage section



Optional accessory: Hose ø28mm x 5m

General cleaning VC014GL



Wet & Dry

Flexible hose ø28mm x 0.4 - 2m



Automatic filter cleaning mechanism

When Damper and Pre filter are attached



Improved usability during dust disposal

A dust collection bag can be attached inside the tank to suppress the spread of dust and particles during dust disposal.

Easy disposal



Filter bag

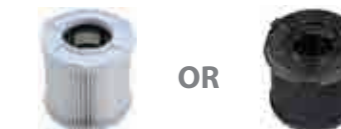
Paper filter bag

Flexible hose ø28mm x 0.4 - 2m



HEPA filter

Wet filter (Wet only)



OR

Use the wet filter when picking up water repeatedly.

Filter bag

(made of non-woven fabric) Effectively captures fine dust particles. Suitable for cleaning with the wireless activation function.



Equipped with a shutter to reduce dust spreading when disposing of the bag.

Paper filter bag

Catches fine debris like dust and hair.

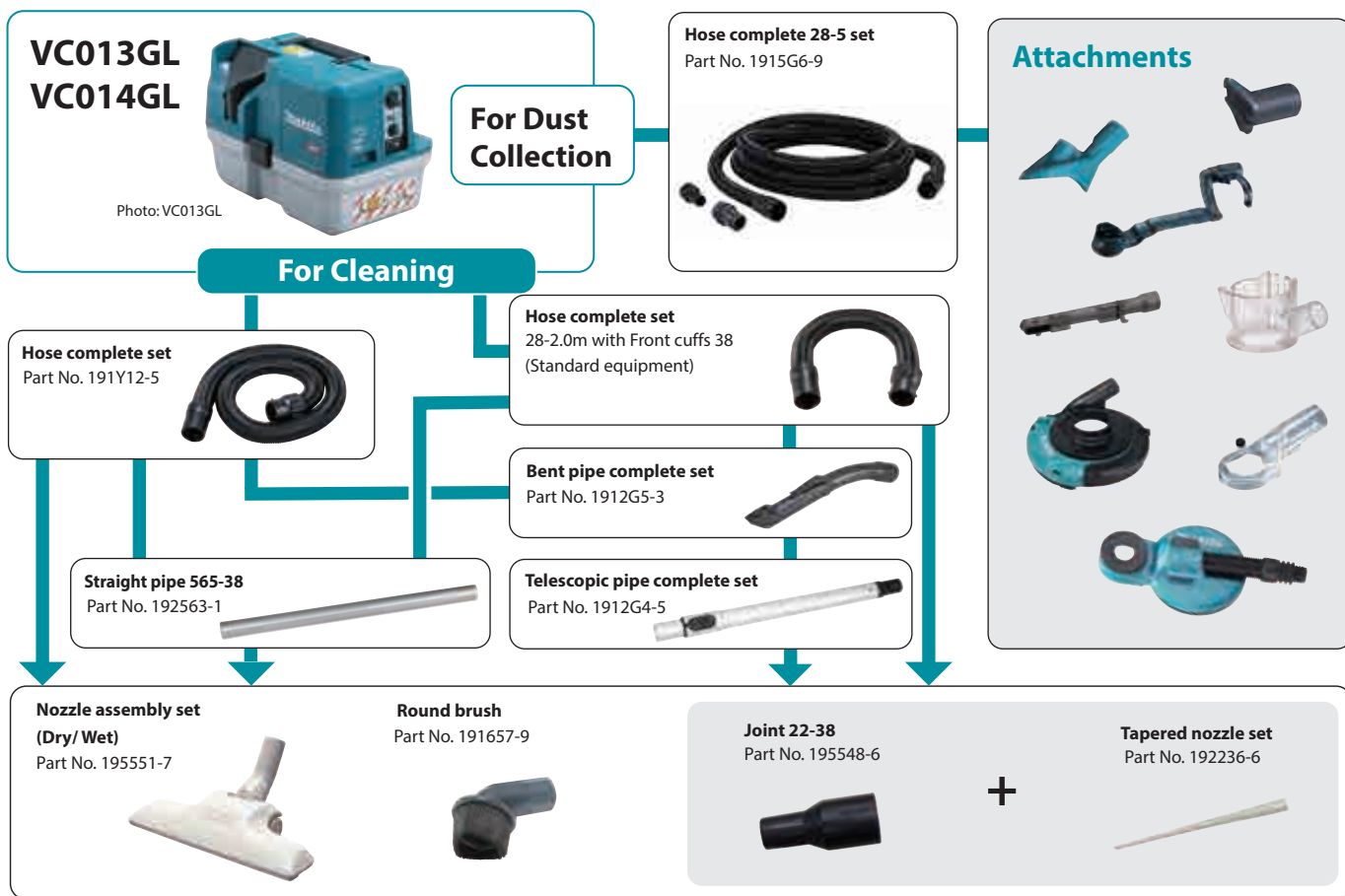


Dust stopper

When you do not use a paper pack/filter bag, place the dust stopper in storage position on the head unit.



Accessories



Filter complete, Pre filter and Damper

<p>Pre filter and Damper set Dry only Part No. 199827-4</p>	<p>Wet filter set Wet only Part No. 1915T4-4</p>	<p>Poly bag set Part No. 195432-5</p>	<p>Filter bag set 10per pkg. Part No. 1915T3-6</p>	<p>Paper filter bag set 10per pkg. Part No. 1915W5-3</p>	<p>Caster Set two with stoppers and two without stoppers Part No. 1915G5-1</p>	<p>Shoulder Belt Set Part No. 199486-4</p>	<p>Wireless unit set VC013GL only Part No. 198900-7 Part No. 198901-5 Part No. 199393-1</p>
--	---	--	---	---	---	---	--

Charging Time

	Fast Charging	
	DC40RA	DC40RC
*1 BL4020 2.0Ah	22 min	30 min
*1 BL4025 2.5Ah	28 min	38 min
*1 BL4040/F 4.0Ah	45 min	67 min
*1 BL4050F 5.0Ah	50 min	85 min
*1 BL4080F 8.0Ah	76 min	170 min

*1 Recommended battery

Cordless Vacuum Cleaner

VC013GL / VC014GL

Variable Speed	Suction power	25 - 165 W
Anti-restart function	Max sealed suction	4.5 - 15 kPa
	Air volume	1.0 - 2.0 m ³ /min
	Capacity	Dust / Water: 7.5 / 4.5 L
	Continuous use (Battery)	22 - 120 min.
	Vibration level (EN60335-2-69)	BL4050F 2.5 m/s ² or less
	Vibration K factor (EN60335-2-69)	1.5 m/s ²
	Sound power level (EN60335-2-69)	75 dB(A)
	Noise K factor (EN60335-2-69)	2.5 dB(A)
	Dimensions (L x W x H)	400 x 251 x 282 mm (15-3/4 x 9-7/8 x 11-1/8")
	Net weight (Battery)	5.0 - 6.2 kg (11.0 - 13.7 lbs.)
	(Attachment)	BL4020 - BL4080F Supplied hose and nozzle

Standard Equipment: Hose complete, Wide nozzle, Sash nozzle, Shoulder belt, Damper (VC013GL), Prefilter, Filter bag (VC013GL), Wireless unit set (VC013GL), Paper filter set, Wet filter, Battery, Charger

The weight includes accessories (Hose, Wide nozzle, Sash nozzle) and battery cartridge(s). The lightest and heaviest combination weight of the appliance and battery cartridge(s) are shown in the table. Items of standard equipment and specifications may vary by country or area.

Makita Corporation

3-11-8 Sumiyoshi-cho, Anjo, Aichi, 446-8502 Japan

