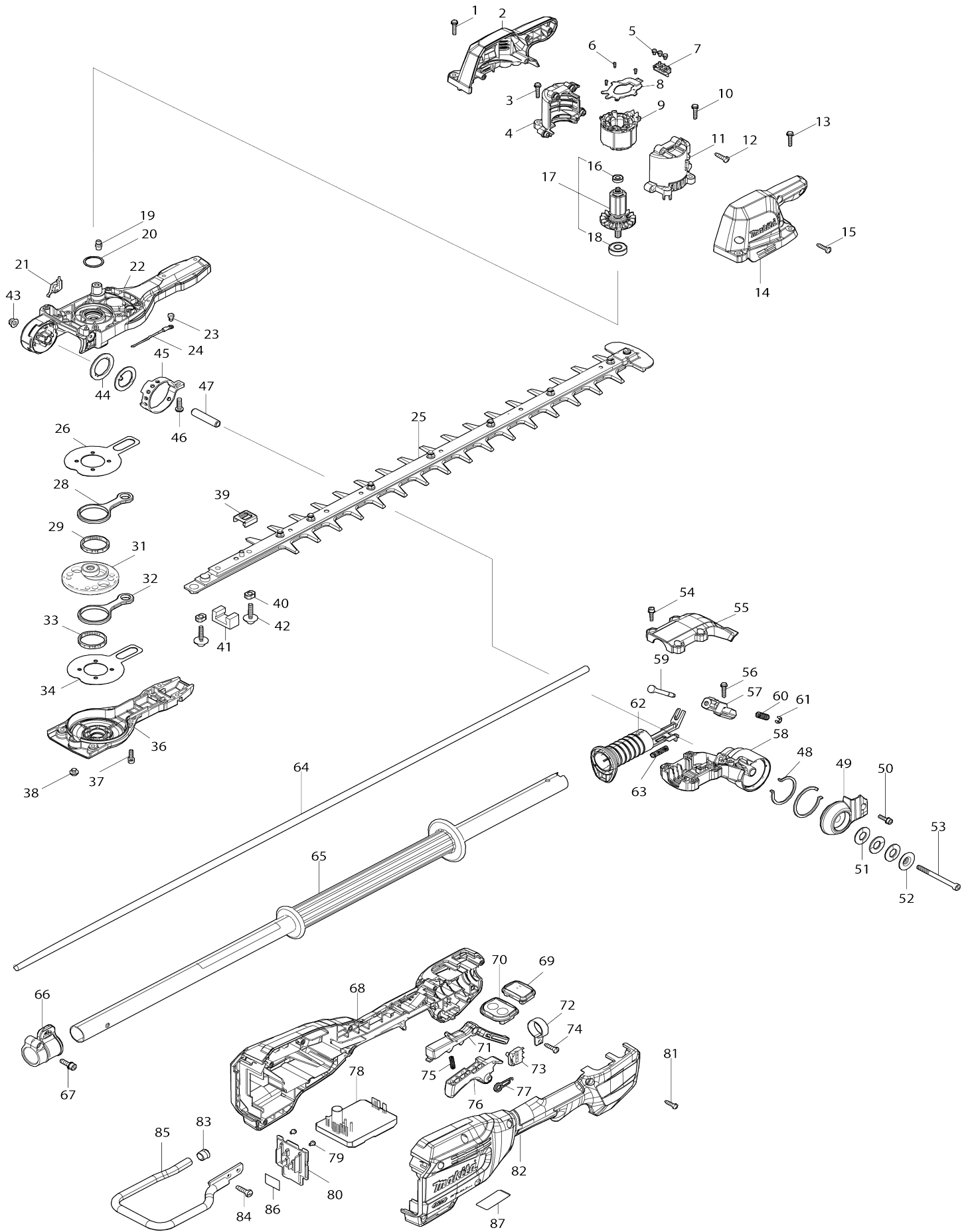


# Model No.UN001G 600MM CRDLSS POLE HDG TRIMMER



**Model No.UN001G 600MM CRDLSS POLE HDG TRIMMER**

Obj. č.	Obj. č.	Popis	Možnost záměny	Množství	Nový/Stary	Poznámka 1	Poznámka 2
001	911138-5	P.H.SCREW M4X20 WITH WR		2			
002	1830N2-0	HOUSING SET		1			
D10		INC. 14					
003	911138-5	P.H.SCREW M4X20 WITH WR		2			
004	1830N0-4	MOTOR HOUSING SET		1			
D10		INC. 11					
005	652069-6	FLAT HEAD SCREW M3X6		3			
006	266490-9	TAPPING SCREW PT 2X6		3			
007	638A88-2	LEAD UNIT		1			
008	620N82-6	CONTROLLER B		1			
009	629A75-2	STATOR		1		stator	
010	911138-5	P.H.SCREW M4X20 WITH WR		2			
011	1830N0-4	MOTOR HOUSING SET		1			
D10		INC. 4					
012	266326-2	šroub 4x18=new265995-6		4			
013	911138-5	P.H.SCREW M4X20 WITH WR		2			
014	1830N2-0	HOUSING SET		1			
D10		INC. 2					
015	266326-2	šroub 4x18=new265995-6		4			
016	210215-3	BALL BEARING 695ZZ		1		lo	
017	510598-4	ROTOR ASSEMBLY		1			
D10		INC. 16,18					
018	210005-4	kulič. ložisko 608DDW = old 2110 31-6		1		kuli	
019	243107-1	GREASE NIPPLE		1			
020	213961-7	O RING 22		1			
021	632V50-5	SWITCH UNIT		1			
022	137154-1	GEAR HOUSING ASS'Y		1			
C10	263002-9	vymezovací čep 4		1			
C20	263005-3	vymezovací čep 6		4			
023	652014-1	Pan Head Screw M4x8		1		pan Head Screw M4x8	
024	638A25-6	LEAD UNIT		1		okruh	
025	1914E7-7	SHEAR BLADE 600R SET		1			
C10	188605-7	OIL VESSEL SET		1			
C20	257859-8	SLEEVE 5		2		pouzdro	
C30	347A61-8	BRUNCH CATCHER		1			
C40	265C90-0	PAN HEAD SCREW M5X10 WITH WR		1			
026	347361-0	FRICITION PLATE		1		deska	
028	347662-6	CONNECTING ROD		1		ty	
029	212229-8	NEEDLE CAGE 315		1		lo	
031	137187-6	HELICAL GEAR ASS'Y		1			
C10	210029-0	BALL BEARING 608ZZ		1			
C20	211499-6	BALL BEARING 626ZZ		1		lo	
032	347662-6	CONNECTING ROD		1		ty	
033	212229-8	NEEDLE CAGE 315		1		lo	
034	347361-0	FRICITION PLATE		1		deska	
036	137155-9	GEAR HOUSING COVER ASS'Y		1			

C10	263002-9	vymezovací čep 4		1		
037	922128-3	šroub imbus = old 266178-1		6		
038	266559-9	H.S.BUTTON HEAD BOLT M6X4		1		
039	422B58-5	DUST SEAL		1		
040	257859-8	SLEEVE 5		2		pouzdro
041	443159-4	SEAL		1		veden
042	265A89-3	H.S.H.BOLT M5X25 WITH WR		2		
043	252286-4	COLLARED HEX.LOCK NUT M5-8		1		matka M5-8 DUB184 =old252103-8
044	347C46-6	LOCK WASHER 27		2		
045	347C47-4	ANGULAR HOLDER		1		
046	265487-5	H.S. BUTTON HEAD BOLT M5X16		1		
047	257761-5	SLEEVE 6		1		
048	347C45-8	LOCK WASHER 39		2		
049	312F28-5	SIDE COVER		1		
050	922128-3	šroub imbus = old 266178-1		1		
051	232868-8	CONED DISK SPRING 12		3		
052	253603-1	DISK WASHER 5		1		
053	922912-6	HEX. SOCKET HEAD BOLT M5X65		1		
054	922128-3	šroub imbus = old 266178-1		5		
055	312F27-7	PIPE HOLDER COVER 24		1		
056	911138-5	P.H.SCREW M4X20 WITH WR		1		
057	4130D3-7	STOPPER PIN HOLDER		1		
058	312F26-9	PIPE HOLDER 24		1		
059	327D58-1	STOPPER PIN		1		
060	231294-8	vinutá pružina		1		vinut
061	961011-9	zajišťovací kroužek		1		zaji
062	4130D4-5	SLIDE GRIP 24		1		
063	232299-1	COMPRESSION SPRING 5		1		pru
064	638A86-6	LEAD UNIT		1		
065	141V73-7	PIPE 24 COMPLETE		1		
C10	8076E3-4	CAUTION LABEL		1		
066	168478-4	HANGER		1		zav
067	922228-9	H.S.H.BOLT M5X18 WITH WR		1		
068	1830V9-2	GRIP HOUSING SET		1		
C10	263005-3	vymezovací čep 6		2		
D10		INC. 82				
069	141V75-3	INDICATION CIRCUIT COMPLETE		1		
070	141V77-9	SWITCH CIRCUIT COMPLETE		1		
071	141V72-9	LOCK OFF LEVER COMPLETE		1		
072	346248-3	CLAMP 24		1		spona 24
073	632V49-0	SWITCH UNIT		1		
074	266326-2	šroub 4x18=new265995-6		1		
075	233101-1	vinutá pružina 4		1		vinut
076	4130D2-9	SWITCH LEVER		1		
077	233612-6	TORSION SPRING 10		1		pru
078	620N88-4	CONTROLLER		1		
079	652031-1	PAN HEAD SCREW M3X6		2		
080	632V24-6	TERMINAL UNIT		1		
081	266326-2	šroub 4x18=new265995-6		9		
082	1830V9-2	GRIP HOUSING SET		1		
C10	263005-3	vymezovací čep 6		2		

D10		INC. 68				
083	422230-7	CAP		1		
084	266420-0	TAPPING SCREW 5X20		2		
085	327D60-4	BATTERY GUARD		1		
086	8146A7-1	UN001G SERIAL NO. LABEL		1		
087	8145Y6-5	UN001G NAME PLATE		1		
A01	122D94-0	BAND ASSEMBLY		1		
A02	458414-1	BLADE COVER 600		1	kryt DUH601 DUN60 0L	
E03	807950-8	SOUND 95DB LABEL		1		
F01	1910T2-8	CHIP RECEIVER 600 SET		1		
F02	1914E7-7	SHEAR BLADE 600R SET		1		
F03	199450-5	GREASE VESSEL SET		1		

Prosím uveďte objednáací číslo dílu v objednávce

Datum tisku 06. 08. 2024